



TOUCH  
SCREEN 7"



INTERNET  
OF THINGS



WiFi



USB



ETHERNET



DATA MATRIX



## COMPACT, PORTABLE CR80 METAL TAG EMBOSSEER WITH 2D DATA MATRIX OPTION

The **ME550 CR80 DATA MATRIX** is a portable metal tag embosser to mark alphanumeric characters and **2D DATA MATRIX** barcodes on **CR80** tag sizes (85,6 mm x 54 mm / 3.37" x 2.13") ideal for permanent marking of aluminum and stainless steel tags. The **2D DATA MATRIX** barcode has the great advantage of containing a high volume of data on limited space. With a 10% increase in production speed, a completely renewed design and new features, the **ME550 CR80 DATA MATRIX** is an advanced solution that can be integrated into any existing factory or office network.

### 7" color touchscreen display with high resolution

The **ME550 CR80 DATA MATRIX** is equipped with a built-in 7" WVGA LCD touchscreen display with simple and easy to use icon and buttons. The user can access and manage machine functions through a multi-level menu in an easy and intuitive way.

### IoT (Internet of Things) remote access and management

- **Web services:** The machine set-up and operations can be entirely managed remotely via the web or through the use of VNC (Virtual Networking Computing) client, using a personal computer or other devices connected to the Customer's network.

- **Data transfer:** Data import/export and the machine updating can be managed from any device connected to the embosser via Ethernet by using the FTP protocol (file transfer protocol).

### USB (type A, type B), Ethernet and WiFi

The **ME550 CR80 DATA MATRIX** can be connected to a personal computer, to load data and start production, or to another device, such as keyboard, barcode reader or other if needed.

The **ME550 CR80 DATA MATRIX** is a completely self-contained tag marking machine, and is ideal for component and production line identification and traceability applications. Designed to operate in harsh industrial environments and easy to transport.



USED BY

- AUTOMOTIVE PLANTS
- SHIPYARDS
- STEEL PLANTS
- INDUSTRIAL MANUFACTURERS
- LOGGING INDUSTRIES
- LOGISTICS MANAGEMENT
- POWER & UTILITY COMPANIES



IDEAL FOR

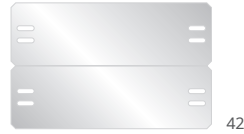
CR80 SIZE

# FEATURES AND SPECIFICATIONS

**MODEL NAME** ME550 CR80 DATA MATRIX

## PLATE AND FEEDER

Dimensions Metal plates: CR80 standard 85,6 x 54 mm - 3.37 x 2.13 in (WxH)



Materials Aluminum, stainless steel  
 Thickness Metal plates: 0,356 ÷ 0,70 mm / 0.014 ÷ 0.0275 in  
 Input hopper Up to 120 plates capacity (0,4 mm / 0.0157 in)  
 Output hopper External collection tray

## MARKING

Technology Embossing or debossing  
 Wheel capacity 60 slots  
 Type set Simplex 2, Block USA, Block 5, OCRB1  
 Embossing area See picture  
 Performance 120 tags per hour based on 55 characters (112 tags per hour based on 60 characters)

## COMMUNICATION AND SOFTWARE

Interface USB 2.0 port (device and host), Ethernet. WiFi (optional)  
 Software Linux based self enclosed software  
 PowerTag PC application proprietary software Windows 7/8/10  
 PowerTag USB on USB key for multiple use  
 Protocol Multiembosser  
 Optional: Cim, Xon-Xoff, Stored Format default, Stored Format Selected and Pound-Pound

## HARDWARE

System CPU Arm Cortex-A8 / RAM 256 MB, with flash-disk and file system Linux O.S. based  
 Power supply Universal switching power supply 100-240 volts; 50 or 60 hz  
 Power consumption 300 Watt max  
 Operating environment Temperature: 5° ÷ 40°c / 41° ÷ 104° F, relative humidity 30% ÷ 90%

## VARIOUS

Others Built in touch screen 7", multi-language user interface management: English, Spanish, Italian  
 Innovative embedded software up-grade system thru pen drive and web server  
 Interchangeable input hopper for easy charge and discharge of medical alert & dog tags  
 Machine configuration protected by password for high security and data protection  
 Easy to carry handle, no packaging required

## CERTIFICATIONS

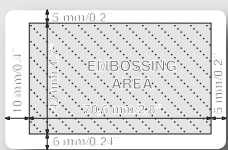
UL, FCC, CE, ROHS

## WARRANTY

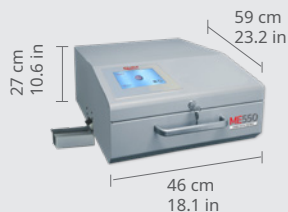
12 months



### EMBOSSING AREA



### DIMENSION



### WEIGHT

26 Kg / 57.3 lbs



### SOFTWARE

power tag  
LITE  
optional  
power tag  
EVO